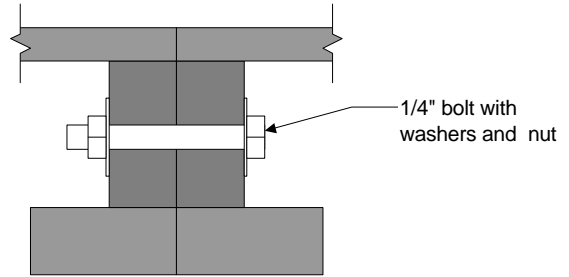
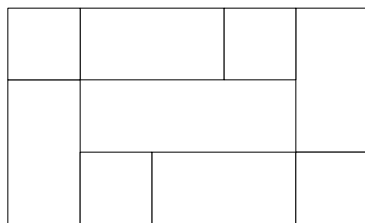
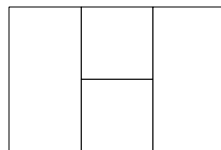
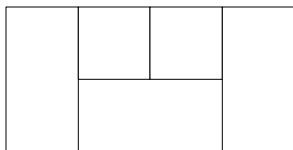
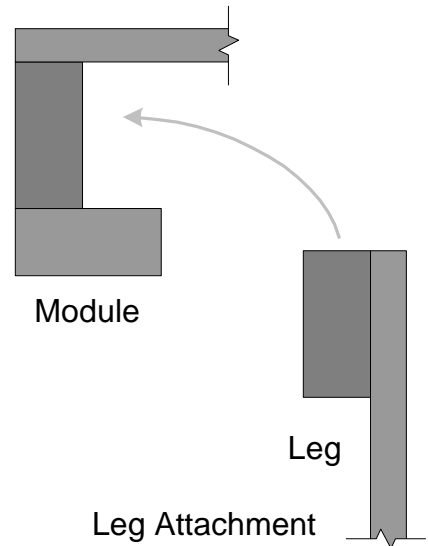


Assembly Plan:

Numerous configurations are possible, limited only by the number of modules you build. See below for a few examples. Assembly is completed by simply bolting modules and legs together with 1/4" bolts. I prefer wingnuts and washers for quick assembly. Legs can be placed as required to support the modules. If X equals the number of modules you have, you will generally need 2X+2 legs. Legs bolt into module corners as shown below.



Bolt Attachment



Module

Leg

Leg Attachment

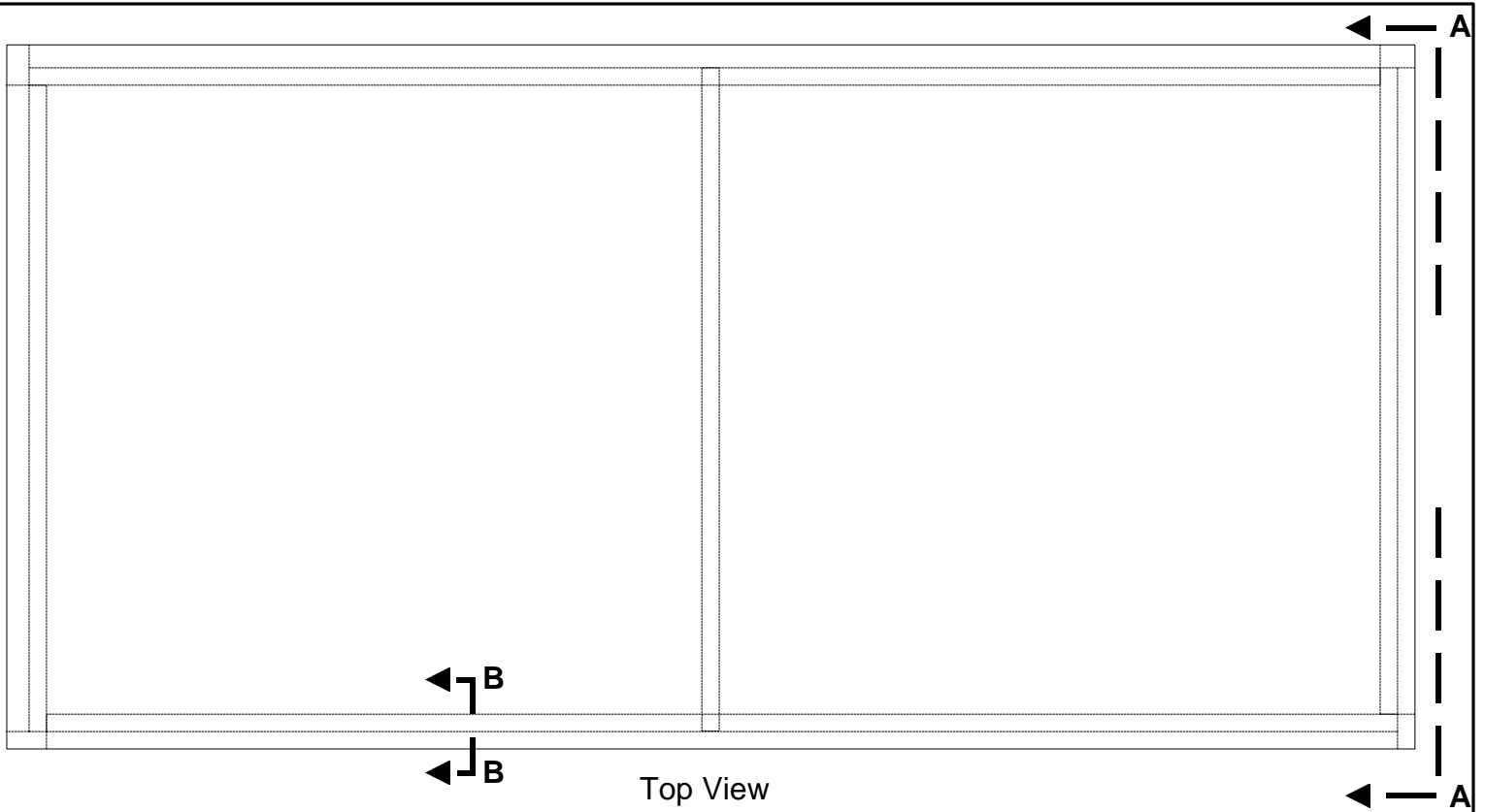
Design Notes:

The modules are sized to work with Lego. A small module is 48 times the size of a 2x2 Lego brick, will hold 9 32x32 stud baseplates. or six lengths of 9V train track. Also, it allows for a full circle of track to be made within the width of one module. The modules are sized to be light and easy to transport. One person can easily carry a module and the legs are detachable.

Holes in the side of the modules are oversized and allow for error in production process or possible misalignments.

Assembly Plan
Modular Lego Train Table
Drawn by: Ben Fleskes

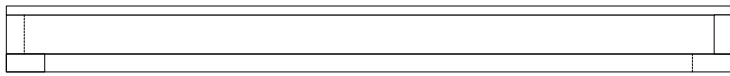
- 1 tl = 1 track length
- 1 tl = 16 studs
- 1 tl = 128 mm
- 1 tl = 5 1/32"



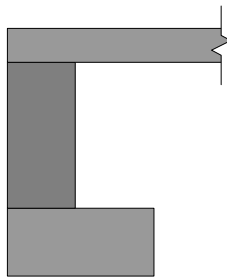
Top View



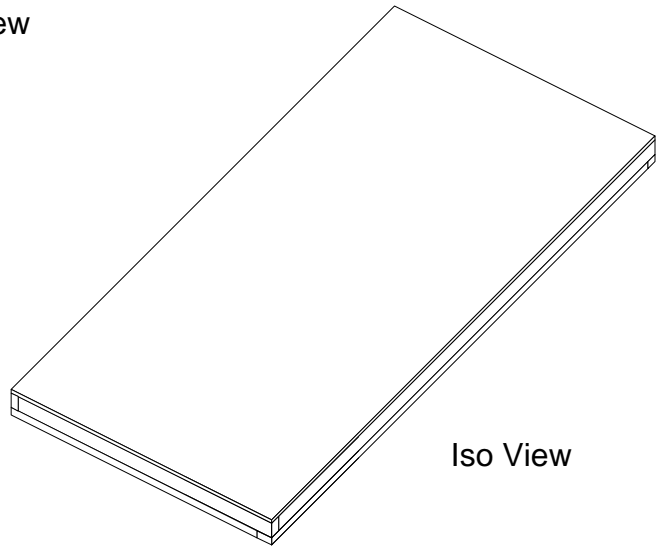
Side View



View A-A



Section B-B



Iso View

6tl x 12tl Module Design
Modular Lego Train Table
Drawn by: Ben Fleskes

1 tl = 1 track length
 1 tl = 16 studs
 1 tl = 128 mm
 1 tl = 5 1/32"

Material Requirements			
Material	Dimension(US)	Dimension (Metric)	Optional Size (6tl x 6tl)
3/8" Plywood	30 1/4" x 60 1/2"	768mm x 1536mm	30 1/4" x 30 1/4"
1x2*	Cut to match plywood*	Cut to match plywood*	
Screws	As required		
*1x2 with a 1 5/8" height is recommended			* five 8' 1x2 required for one module

Slightly Bevel top and bottom of 1x2

View A
(enlarged)

Top View

3/8" hole, match drill from hole in module
(typ 2x)

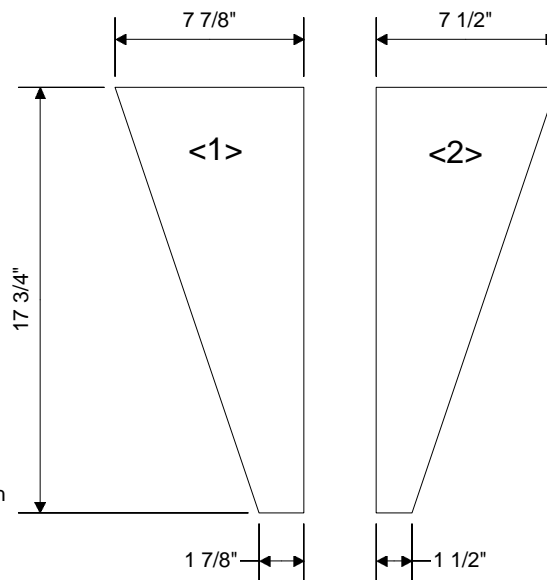
See View A

35 5/8"

Iso view

Left View

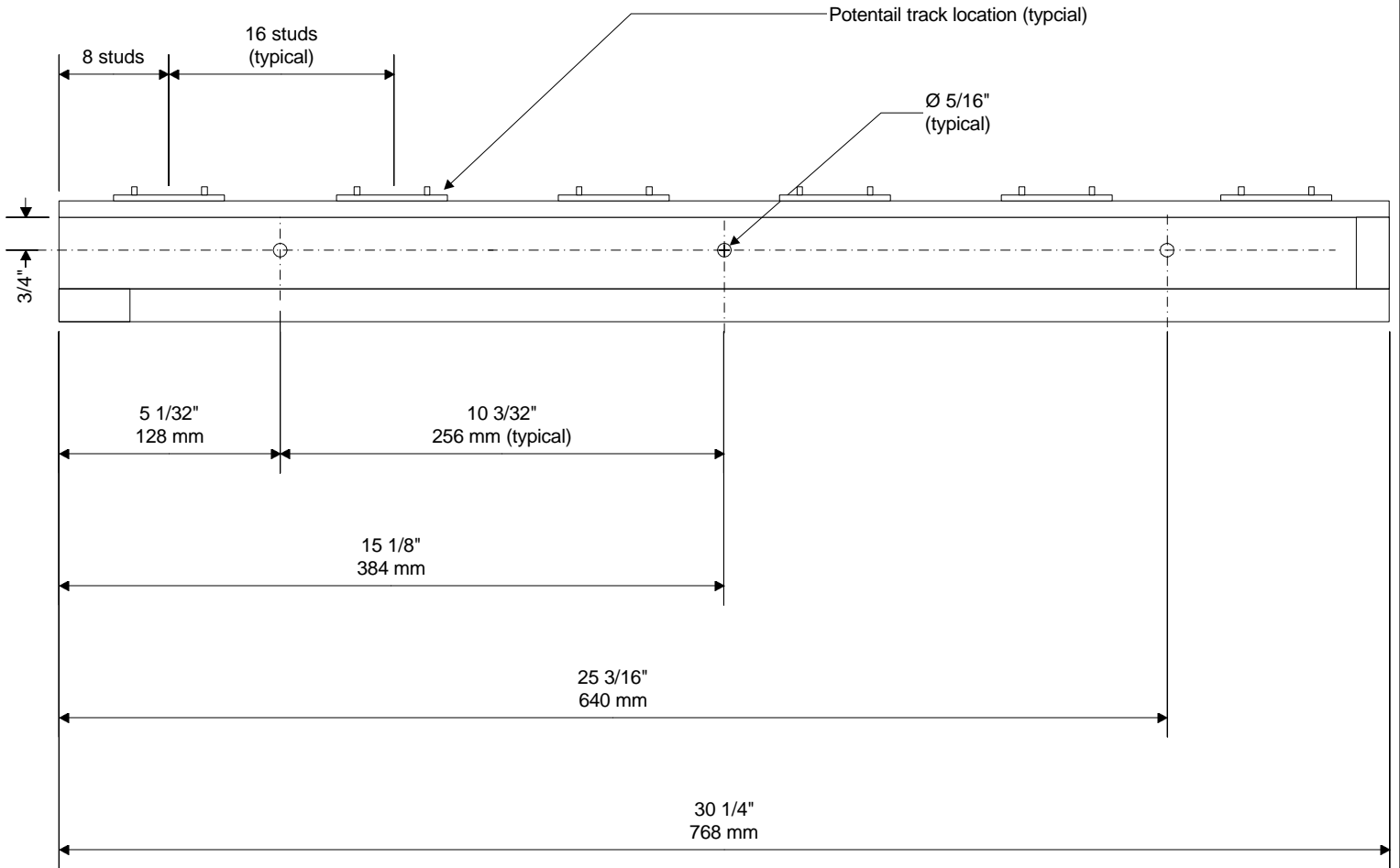
Side View



Material Requirements	
Material	Dimension
1x2	8.25"
1x2	9"
2x2	35 5/8"
3/8" Plywood	<1>
3/8" Plywood	<2>
screws	

1 tl = 1 track length
 1 tl = 16 studs
 1 tl = 128 mm
 1 tl = 5 1/32"

Modular Leg Design
Modular Lego Train Table
Drawn by: Ben Fleskes



Module End View

Note: Repeat pattern on all sides of the module. On the long side of modules, measure the left most holes from the left and the right most holes from the right.

Module hole pattern and track alignment

Modular Lego Train Table

Drawn by: Ben Fleskes

1 tl = 1 track length
 1 tl = 16 studs
 1 tl = 128 mm
 1 tl = 5 1/32"